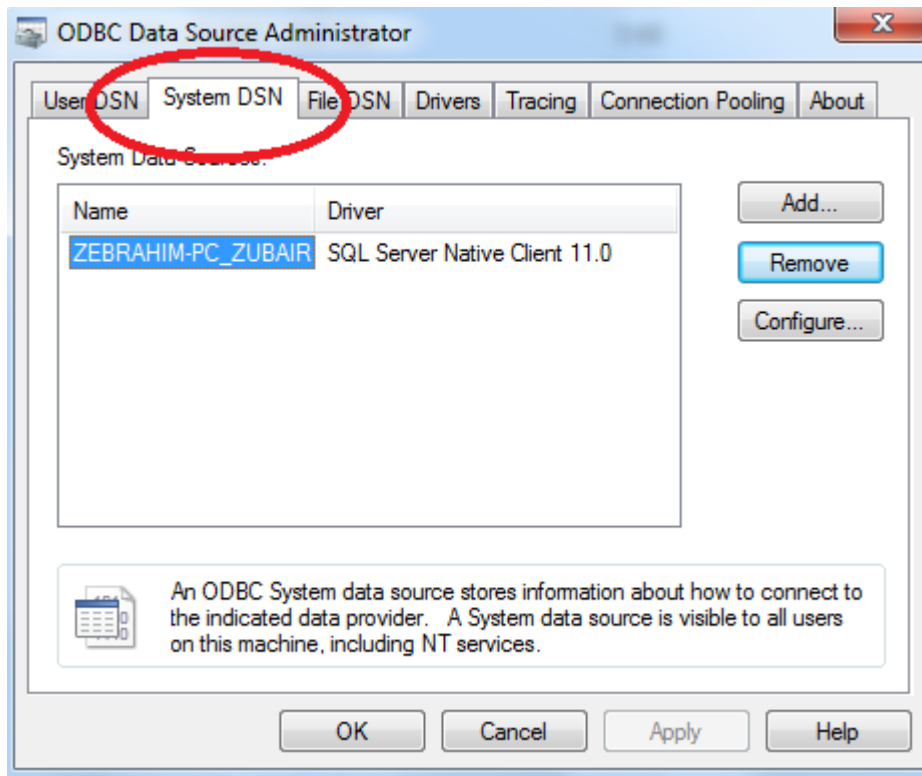


Manually Create an ODBC Connection

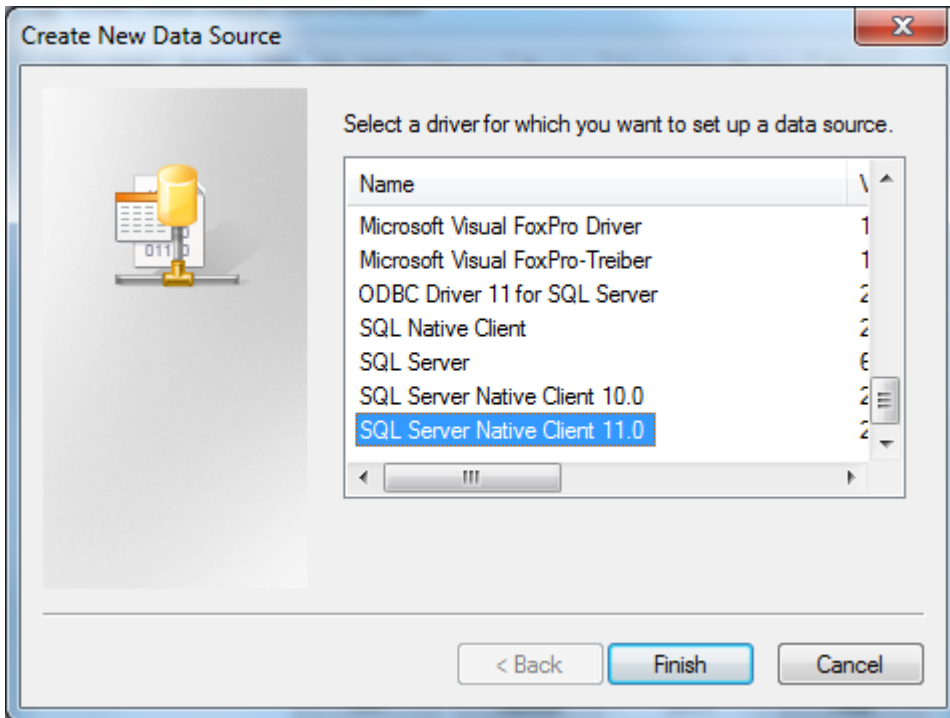
1) Navigate to the `odbcad32.exe` file in the following folder:

C:\Windows\System32 (for 32Bit operating systems)
C:\Windows\SysWOW64 (for 64Bit operating systems)

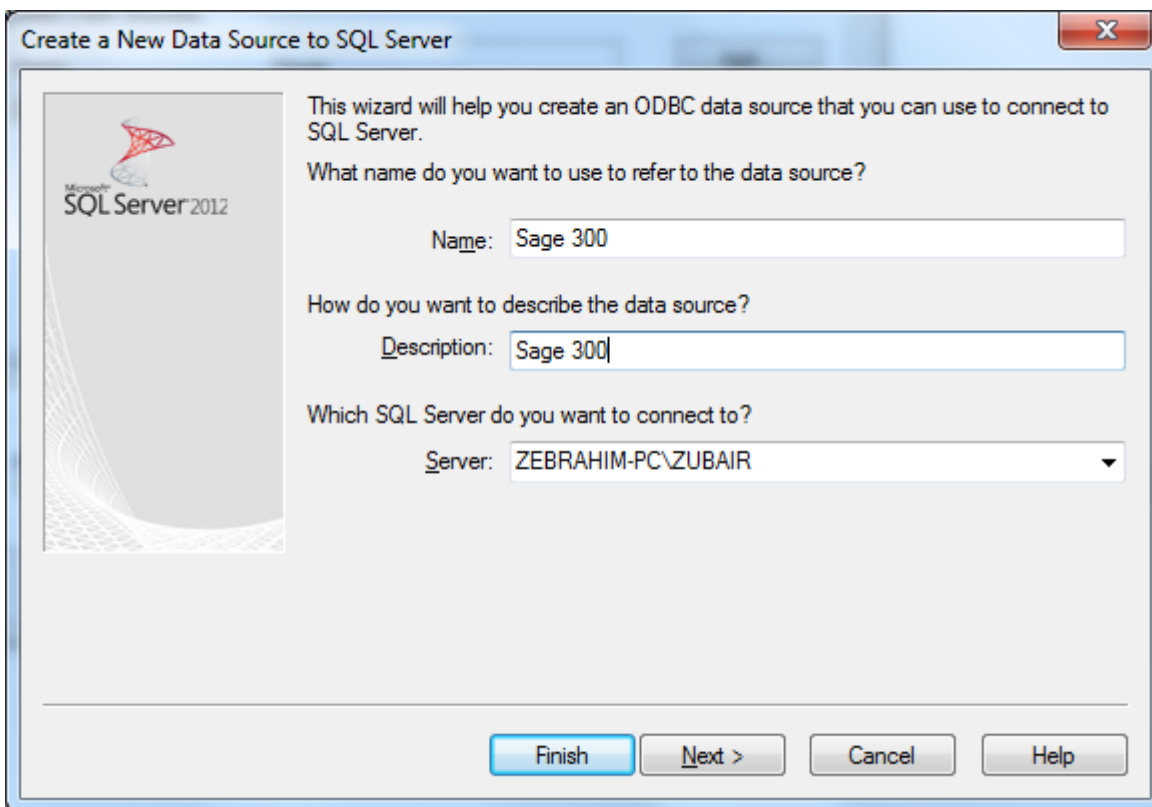
2) Navigate to the 2nd tab call System DSN



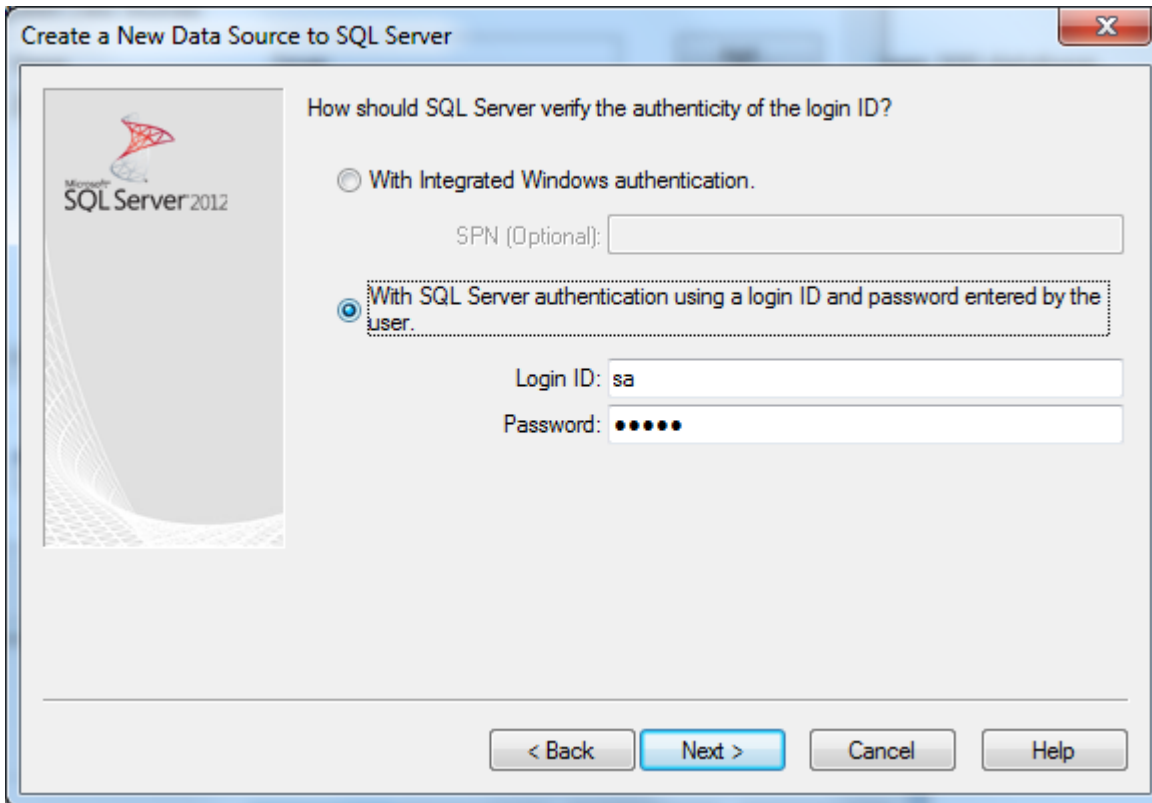
3) Click on Add and then scroll to the end, select SQL Server Native Client 11.0



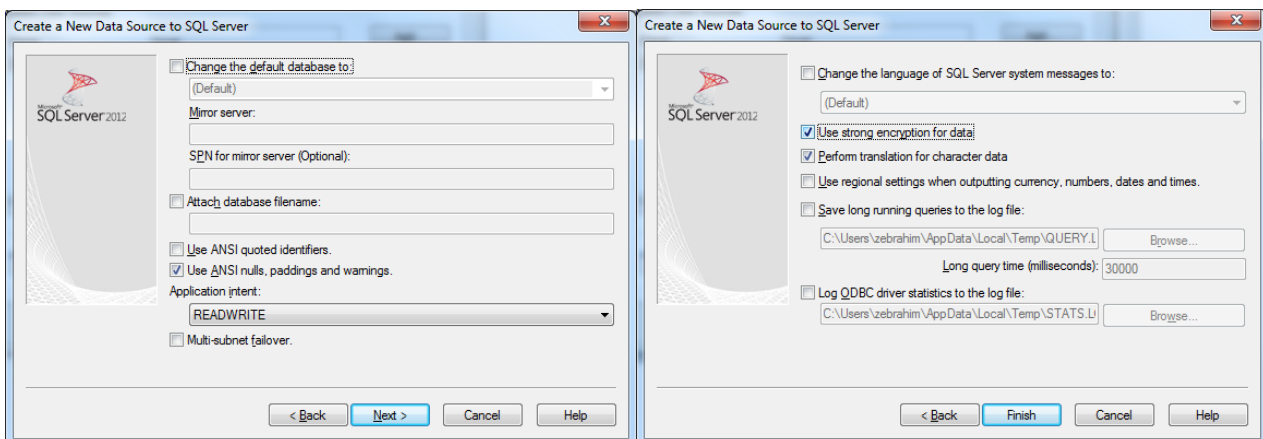
4) Name the data source and create a description. Then select the SQL Server that contains the Sage 300 database.



5) Enter the SQL login username and password, then click on Next



6) Click Next and the following screens and then click Finish



7) Click on Test Data Source. If the connection is successful, it will say TEST COMPLETED SUCCESSFULLY. If not then it will say TEST FAILED.

